

LOCOMO PRO HARDSHELL BOTTOM COMPARTMENT

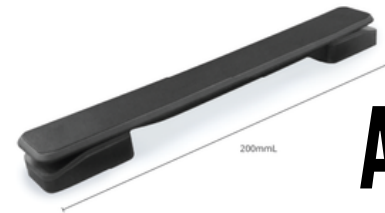
Item#: PY6703R60R25 +
WR062 + WHL045 + SH140



Wheel Diameter: 84 mm
Honeycomb wheel hub provides
a premium look and feel.

AKITA HANDLE

The ESD-coated handle tubes have a premium look with a glossy surface with excellent corrosion resistance.



AKITA TOP HANDLE

Item#: HG068
A low-profile design of a top carry handle that is well-matched with compact and strong hard case luggage. Easy lifting and handling.



EXCLUSIVE
HARD SHELL



AKITA SPINNER WHEEL

Item#: WR069 + WHL051
Wheel Diameter: 48mm
Minimal style. Multi-directional single wheels allow smooth, 360-degree movement



AKITA HANDLE

Item#: PY7205R61R50_2

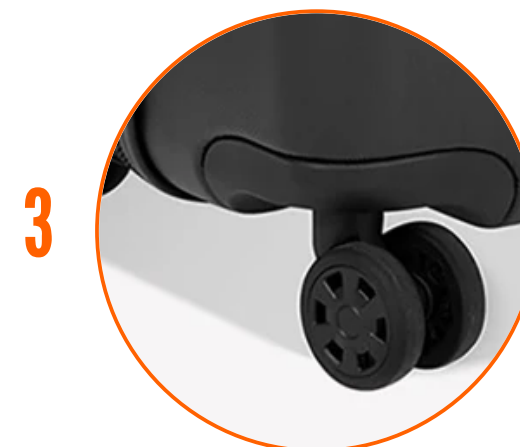
- This handle is built with a focus on user comfort.
- Built from aircraft-grade aluminum components to withstand the rigors of frequent travel and rough handling without structural compromise.



AKITA TOP HANDLE

Item#: HG068

- Low-profile design that is well-matched with compact and strong hard case luggage
- Ergonomic design that provides comfortable finger access and ergonomic hand feel.



SANTANA SPINNER CUT RIM DOUBLE WHEEL 50

Item#: WR079 + WHL058N

- It features a unique and vivid slim wheel style.
- The product also has a modern and stable mini-style double wheel post and wheel housing.
- It is designed for easy assembly.